

- SEALING DEVICE FOR HIGH PRESSURE COOLANT SUPPLY
- УПЛОТНИТЕЛЬНОЕ УСТРОЙСТВО ДЛЯ ХЛАДАГЕНТА ПОД ВЫСОКИМ ДАВЛЕНИЕМ
- URZĄDZENIA USZCZELNIAJĄCE CIĘCZ CHŁODZĄCĄ POD WYSOKIM CIŚNIENIEM
- TĚSNICÍ ZAŘÍZENÍ PRO PŘÍVOD VYSOKOTLAKÉHO CHLADIVA
- YÜKSEK BASINÇLI SOĞUTMA SIVISI BESLEMESİ İÇİN SIZDIRMAZLIK ELEMANI

## FORCE GH - VT

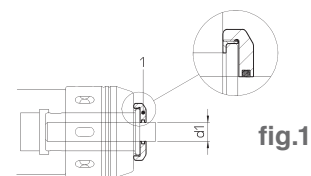


fig.1

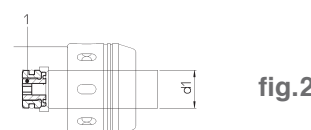


fig.2

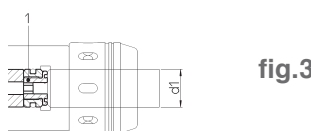
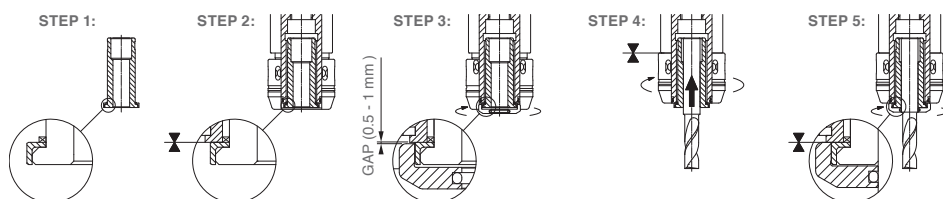


fig.3

fig.	REF.	CODE 1	d1
1	GH 20 MONOforce 20 HSK63 MHD'50 / DIN/BT-40-50	38 20 42 020061	6
		38 20 42 020081	8
		38 20 42 020101	10
		38 20 42 020121	12
		38 20 42 020141	14
		38 20 42 020161	16
2	VT 20.20 MONOforce 20 DIN/BT-40-50 HSK63-100	38 20 42 020201	20
1	GH 32 MONOforce 32 DIN/BT-40-50 / HSK63-100 MHD'63	38 20 42 032061	6
		38 20 42 032081	8
		38 20 42 032101	10
		38 20 42 032121	12
		38 20 42 032141	14
		38 20 42 032161	16
		38 20 42 032181	18
		38 20 42 032201	20
		38 20 42 032251	25
2	VT 32.32 MONOforce 32 DIN/BT-40 HSK/63-100	38 20 42 032321	32
3	VT 32.32.100 MONOforce 32 DIN/BT-50	38 20 42 032322	32



- SETTING SCREW FOR INTERNAL COOLANT SUPPLY
- ЗАЖИМНЫЕ ВИНТЫ ПРОХОДА ХЛАДАГЕНТА
- ŚRUBA REGULUJĄCA PRZEPŁYW CIĘCZY CHŁODZĄCEJ
- NASTAVOVACÍ ŠROUB PRO INTERNÍ PŘÍVOD CHLADIVA
- DAHILI SOĞUTMA SIVISI BESLEMESİ İÇİN AYAR VIDASI

## FORCE VCR

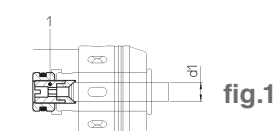


fig.1

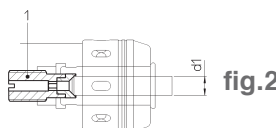
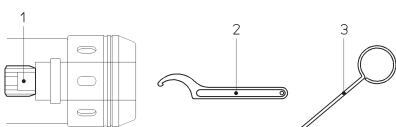


fig.2

fig.	REF.	CODE 1	d1
1	VCR 20 MONOforce 20 HSK63-100 MHD'50	38 20 41 020032	3 ~ 5
		38 20 41 020062	6 ~ 12
		38 20 41 020142	14 ~ 20
1	VCR 32 MONOforce 32 HSK63-100 MHD'63	38 20 41 032033	3 ~ 5
		38 20 41 032063	6 ~ 12
		38 20 41 032143	14 ~ 20
		38 20 41 032253	25 ~ 32
2	VCR 20 MONOforce 20 DIN/BT-40-50	38 20 41 020031	3 ~ 5
		38 20 41 020061	6 ~ 12
		38 20 41 020141	14 ~ 20
2	VCR 32 MONOforce 32 DIN/BT-40	38 20 41 032031	3 ~ 5
		38 20 41 032061	6 ~ 12
		38 20 41 032141	14 ~ 20
		38 20 41 032251	25 ~ 32
2	VCR 32 MONOforce 32 DIN/BT-50	38 20 41 032032	3 ~ 5
		38 20 41 032062	6 ~ 12
		38 20 41 032142	14 ~ 20
		38 20 41 032252	25 ~ 32

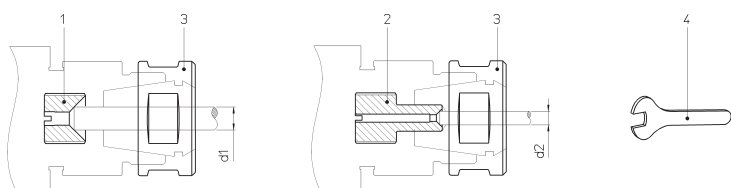


REF.	CODE 1	CODE 2	CODE 3
FORCE 12	20 010 019 1014	10 150 04 0 0028	201271600400
FORCE 20	20 010 019 1615	10 150 04 0 0050	
FORCE 32		10 150 04 0 0075	

## FORCE

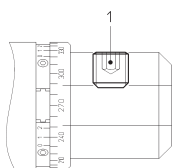


- ACCESSORIES AND SPARE PARTS
- ЗАПЧАСТИ И КОМПЛЕКТУЮЩИЕ
- WYPOSAŻENIE DODATKOWE I CZĘŚCI ZAMIENNE
- PŘÍSLUŠENSTVÍ A NÁHRADNÍ DÍLY
- AKSESUARLAR VE YEDEK PARÇALAR



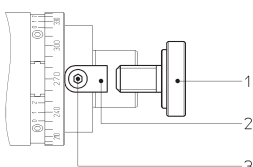
## TOPRUN - ER

REF.	CODE 1	d1	CODE 2	d2	CODE 3	CODE 4
ER 16	20 108 20 10 001	5 ~ 10	20 108 20 10 002	1 ~ 4	20 104 19 100 01	20 127 150 2200
ER 25	20 108 20 18 001	8 ~ 16	20 108 20 18 002	2 ~ 7	20 104 30 100 02	20 127 150 3400
ER 32	20 108 20 22 001	8 ~ 20	20 108 20 22 002	3 ~ 7	20 104 40 150 01	20 127 150 4500



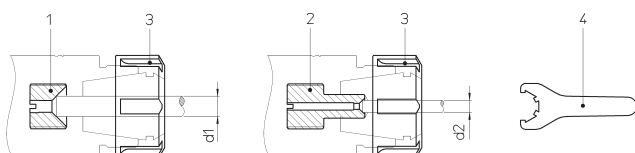
## TOPRUN - WLD

REF.	CODE 1	REF.	CODE 1
WLD 06	20 010 019 0610	WLD 16	20 010 019 1414
WLD 08	20 010 019 0810	WLD 20	20 010 019 1616
WLD 10	20 010 019 1010	WLD 25	20 010 019 1820
WLD 12	20 010 019 1212	WLD 32	20 010 019 2020



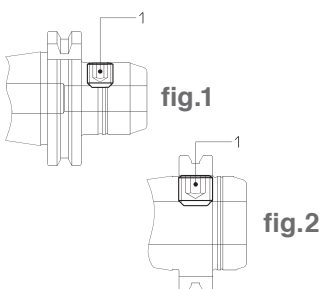
## TOPRUN - PFS

REF.	CODE 1	CODE 2	CODE 3
PFS 16	20 108 03 08 001	20 110 18 008 01	10 005 1 030 008
PFS 22	20 108 03 10 001	20 110 18 010 02	10 005 1 040 010
PFS 27	20 108 03 12 001	20 110 18 012 02	10 005 1 050 012
PFS 32	20 108 03 16 001	20 110 18 014 02	10 005 1 060 016



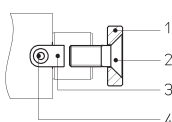
## MONOd' - ER

REF.	CODE 1	d1	CODE 2	d2	CODE 3	CODE 4
ER 16 M	20 108 20 10 001	5 ~ 10	20 108 20 10 002	1 ~ 4	10 045 1 01 16 00	10 150 10 0 1600
ER 25	20 108 20 18 001	8 ~ 16	20 108 20 18 002	2 ~ 7	10 045 1 03 25 00	10 150 10 0 2501
ER 32	20 108 20 22 001	8 ~ 20	20 108 20 22 002	3 ~ 7	10 045 1 03 32 00	10 150 10 0 3201
ER 40	20 108 20 28 001	9 ~ 26	20 108 20 28 002	4 ~ 8	10 045 1 03 40 00	10 150 10 0 4001



## MONOd' - WD

fig.	REF.	CODE 1	fig.	REF.	CODE 1
1	WD 06	20 010 019 0610	1	WD 20	20 010 019 1616
	WD 08	20 010 019 0810	2		20 010 019 1613
	WD 10	20 010 019 1010	1	WD 25	20 010 019 1820
	WD 12	20 010 019 1212	2		20 010 019 1821
	WD 14		1	WD 32	20 010 019 2020
	WD 16				
	WD 18	20 010 019 1414		WD 40	



## MONOd' - PF

REF.	CODE 1	CODE 2	CODE 3	CODE 4
PF 16	20 101 0085 01 0	10 010 1 080 025	20 110 18 008 01	10 005 1 030 008
PF 22	20 101 0105 03 0	10 010 1 100 025	20 110 18 010 02	10 005 1 040 010
PF 27	20 101 0125 03 0	10 010 1 120 030	20 110 18 012 02	10 005 1 050 012
PF 32	20 101 0165 02 0	10 010 1 160 035	20 110 18 014 02	10 005 1 060 016

# D'ANDREA ACCESSORIES

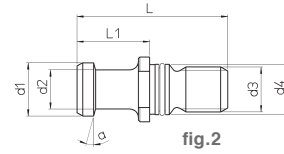
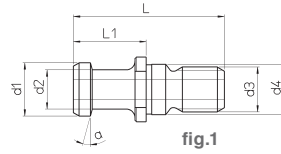
- ACCESSORIES
- КОМПЛЕКТУЮЩИЕ
- WYPOSAŻENIE DODATKOWE
- PŘÍSLUŠENSTVÍ
- AKSESUARLAR





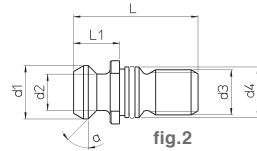
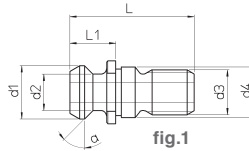
- ACCESSORIES
- КОМПЛЕКТУЮЩИЕ
- WYPOSAŻENIE DODATKOWE
- PŘÍSLUŠENSTVÍ
- AKSESUARLAR

## ISO 7388/2 A - DIN 69872



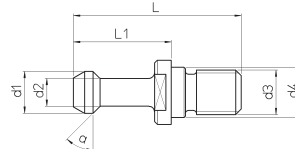
REF.	CODE	ISO	d1	d2	d3	d4	L	L1	a	fig.
<b>ISO 7388/2 A DIN 69872</b>	20 143 025 0401	40	19	14	M16	17	54	26	15°	1
	20 143 025 0451	45	23	17	M20	21	65	30		
	20 143 025 0501	50	28	21	M24	25	74	34		2
	20 143 025 0400	40	19	14	M16	17	54	26		
	20 143 025 0500	50	28	21	M24	25	74	34		
	20 143 025 0600	60	40	30	M30	32	90	40		

## ISO 7388/2 B - ANSI B.5 50



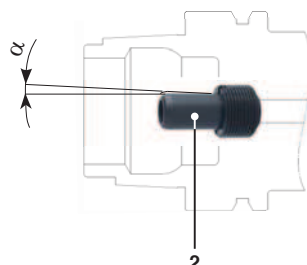
REF.	CODE	ISO	d1	d2	d3	d4	L	L1	a	fig.
<b>ISO 7388/2 B ANSI B.5 50</b>	20 143 025 1401	40	18.95	12.95	M16	17	44.50	16.40	45°	1
	20 143 025 1451	45	24.05	16.30	M20	21	56	20.95		
	20 143 025 1501	50	29.10	19.60	M24	25	65.50	25.55		2
	20 143 025 1400	40	18.95	12.95	M16	17	44.50	16.40		
	20 143 025 1500	50	29.10	19.60	M24	25	65.50	25.55		

## MAS 403 BT - 30° - 45°



REF.	CODE	ISO	d1	d2	d3	d4	L	L1	a
<b>MAS 403 BT 30°</b>	20 143 025 2301	30	11	7	M12	12.5	43	23	30°
	20 143 025 2401	40	15	10	M16	17	60	35	
	20 143 025 2451	45	19	14	M20	21	70	40	
	20 143 025 2501	50	23	17	M24	25	85	45	
	20 143 025 2601	60	32	24	M30	31	115	65	
<b>MAS 403 BT 45°</b>	20 143 025 2302	30	11	7	M12	12.5	43	23	45°
	20 143 025 2402	40	15	10	M16	17	60	35	
	20 143 025 2452	45	19	14	M20	21	70	40	
	20 143 025 2502	50	23	17	M24	25	85	45	
	20 143 025 2602	60	32	24	M30	31	115	65	

## HSK



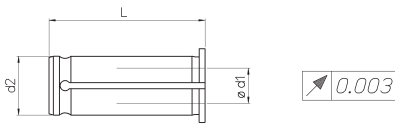
REF.	CODE	α	CODE
<b>HSK-A40</b>	10 150 11 0 1000	± 1°	38 20 19 008001
<b>HSK-A50</b>	10 150 11 0 1400		38 20 19 010001
<b>HSK-A63</b>	10 150 11 0 1600		38 20 19 012001
<b>HSK-A80</b>	10 150 11 0 1800		38 20 19 014001
<b>HSK-A100</b>	10 150 11 0 2200		38 20 19 016001



- ACCESSORIES
- КОМПЛЕКТУЮЩИЕ
- WYPOSAŻENIE DODATKOWE
- PŘÍSLUŠENSTVÍ
- AKSESUARLAR

- BUSHES FOR ULTRA-TIGHT SPINDLE
- ЗАЖИМНАЯ СВЕРХЖЕСТКАЯ ГИЛЬЗА ДЛЯ ШПИНДЕЛЯ
- TULEJE DO WRZECION O DUZEJ SILE ZACISKU
- POUZDRA PRO VYSOCE PEVNÉ VŘETENO
- ULTRA SIKI MIL İÇİN BURÇLAR

**RC**



FORCE (d <sub>2</sub> )	REF.	CODE	d <sub>1</sub>	L
12	<b>RC 12.03</b>	49 70 8 0012030	3	44
	<b>RC 12.04</b>	49 70 8 0012040	4	
	<b>RC 12.06</b>	49 70 8 0012060	6	
	<b>RC 12.08</b>	49 70 8 0012080	8	
	<b>RC 12.10</b>	49 70 8 0012100	10	
20	<b>RC 20.03</b>	49 70 8 0020030	3	50
	<b>RC 20.04</b>	49 70 8 0020040	4	
	<b>RC 20.05</b>	49 70 8 0020050	5	
	<b>RC 20.06</b>	49 70 8 0020060	6	
	<b>RC 20.08</b>	49 70 8 0020080	8	
	<b>RC 20.10</b>	49 70 8 0020100	10	
	<b>RC 20.12</b>	49 70 8 0020120	12	
	<b>RC 20.14</b>	49 70 8 0020140	14	
32	<b>RC 32.03</b>	49 70 8 0032030	3	63
	<b>RC 32.04</b>	49 70 8 0032040	4	
	<b>RC 32.05</b>	49 70 8 0032050	5	
	<b>RC 32.06</b>	49 70 8 0032060	6	
	<b>RC 32.08</b>	49 70 8 0032080	8	
	<b>RC 32.10</b>	49 70 8 0032100	10	
	<b>RC 32.12</b>	49 70 8 0032120	12	
	<b>RC 32.14</b>	49 70 8 0032140	14	
	<b>RC 32.16</b>	49 70 8 0032160	16	
	<b>RC 32.18</b>	49 70 8 0032180	18	
	<b>RC 32.20</b>	49 70 8 0032200	20	
<b>RC 32.25</b>	49 70 8 0032250	25		

- RC 12 SEALED bushes supplied upon request
- Поставляются по запросу гильзы RC 12. по ПЛОТНОСТИ
- Na zamówienie: tuleje RC 12. . . SZCZELNE
- UZAVŘENÁ POUZDRA RC 12 se dodávají na vyžádání
- RC 12 contalı burçlar istek üzerine mevcuttur

- REDUCTIONS
- ПЕРЕХОДНИК
- РЕДУКТОР
- REDUKCE
- KISALTMALAR

**D**



fig.1

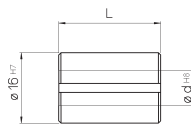
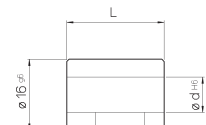


fig.2



REF.	CODE	L	Ø d	fig.
<b>D04.16</b>	20 056 01 16 04 0	23	4	1
<b>D08.16</b>	20 056 01 16 08 2	22	8	2
<b>D10.16</b>	20 056 01 16 10 0	23	10	1
<b>D12.16</b>	20 056 01 16 12 0		12	



K20.50	
1 B3.06	
1 B3.08	
1 B3.11	
1 B3.16	5 TPGX 090202L
1 B3.22	3 WCGT 020102L

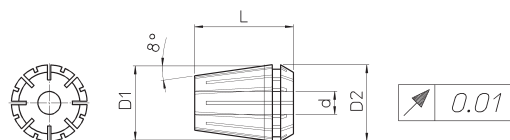
**KIT**  
Ø 6 ~ 30

REF.	CODE	Ø
<b>K20.50</b>	65 50 001 0020 0	6 ~ 30



- ER COLLET
- ЦАНГИ ER
- TULEJA ZACISKOWA ER
- UPÍNACÍ POUZDRO ER
- ER FREZE ÇAKISI TUTUCU

## ER DIN 6499-B



REF.	d	D <sub>1</sub>	D <sub>2</sub>	L
ER 11	0.5 ~ 7	11	11.5	18
ER 16	0.5 ~ 10	16	17	27.5
ER 20	1 ~ 13	20	21	31.5
ER 25	1 ~ 16	25	26	34
ER 32	2 ~ 20	32	33	40
ER 40	3 ~ 26	40	41	46

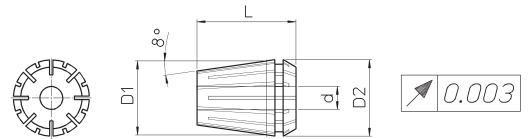
RANGE	ER11	ER16	ER20	ER25	ER32	ER40
1 - 0.5	49 60 8 0111010	49 60 8 0116010	-	-	-	-
1.5 - 1	49 60 8 0111015	49 60 8 0116015	-	-	-	-
2 - 1	-	-	49 60 8 0120020	49 60 8 0125020	-	-
2 - 1.5	49 60 8 0111020	49 60 8 0116021	-	-	-	-
2.5 - 2	49 60 8 0111025	49 60 8 0116025	-	-	-	-
3 - 2	-	49 60 8 0116030	49 60 8 0120030	49 60 8 0125030	49 60 8 0132030	-
3 - 2.5	49 60 8 0111030	-	-	-	-	-
3.5 - 3	49 60 8 0111035	-	-	-	-	-
4 - 3	-	49 60 8 0116040	49 60 8 0120040	49 60 8 0125040	49 60 8 0132040	49 60 8 0140040
4 - 3.5	49 60 8 0111040	-	-	-	-	-
4.5 - 4	49 60 8 0111045	-	-	-	-	-
5 - 4	-	49 60 8 0116050	49 60 8 0120050	49 60 8 0125050	49 60 8 0132050	49 60 8 0140050
5 - 4.5	49 60 8 0111050	-	-	-	-	-
5.5 - 5	49 60 8 0111055	-	-	-	-	-
6 - 5	-	49 60 8 0116060	49 60 8 0120060	49 60 8 0125060	49 60 8 0132060	49 60 8 0140060
6 - 5.5	49 60 8 0111060	-	-	-	-	-
6.5 - 6	49 60 8 0111065	-	-	-	-	-
7 - 6	-	49 60 8 0116070	49 60 8 0120070	49 60 8 0125070	49 60 8 0132070	49 60 8 0140070
7 - 6.5	49 60 8 0111070	-	-	-	-	-
8 - 7	-	49 60 8 0116080	49 60 8 0120080	49 60 8 0125080	49 60 8 0132080	49 60 8 0140080
9 - 8	-	49 60 8 0116090	49 60 8 0120090	49 60 8 0125090	49 60 8 0132090	49 60 8 0140090
10 - 9	-	49 60 8 0116100	49 60 8 0120100	49 60 8 0125100	49 60 8 0132100	49 60 8 0140100
11 - 10	-	-	49 60 8 0120110	49 60 8 0125110	49 60 8 0132110	49 60 8 0140110
12 - 11	-	-	49 60 8 0120120	49 60 8 0125120	49 60 8 0132120	49 60 8 0140120
13 - 12	-	-	49 60 8 0120130	49 60 8 0125130	49 60 8 0132130	49 60 8 0140130
14 - 13	-	-	-	49 60 8 0125140	49 60 8 0132140	49 60 8 0140140
15 - 14	-	-	-	49 60 8 0125150	49 60 8 0132150	49 60 8 0140150
16 - 15	-	-	-	49 60 8 0125160	49 60 8 0132160	49 60 8 0140160
17 - 16	-	-	-	-	49 60 8 0132170	49 60 8 0140170
18 - 17	-	-	-	-	49 60 8 0132180	49 60 8 0140180
19 - 18	-	-	-	-	49 60 8 0132190	49 60 8 0140190
20 - 19	-	-	-	-	49 60 8 0132200	49 60 8 0140200
21 - 20	-	-	-	-	-	49 60 8 0140210
22 - 21	-	-	-	-	-	49 60 8 0140220
23 - 22	-	-	-	-	-	49 60 8 0140230
24 - 23	-	-	-	-	-	49 60 8 0140240
25 - 24	-	-	-	-	-	49 60 8 0140250
26 - 25	-	-	-	-	-	49 60 8 0140260

SET ER	REF.	Ø	CODE
	SET ER11/13	0.5 ~ 7	49 60 8 0111000
	SET ER16/10	0.5 ~ 10	49 60 8 0116000
	SET ER20/12	1 ~ 13	49 60 8 0120000
	SET ER25/15	1 ~ 16	49 60 8 0125000
	SET ER32/18	2 ~ 20	49 60 8 0132000
	SET ER40/23	3 ~ 26	49 60 8 0140000



- ER ULTRA-PRECISE COLLET
- СВЕРХТОЧНЫЕ ЦАНГИ ER
- TULEJA ZACISKOWA ER O WYSOKIEJ PRECYZJI
- VYSOCE PŘESNÉ UPÍNACÍ POUZDRO ER
- ER ULTRA HASSAS ÇAKI TUTUCU

## ER DIN 6499-B



REF.	d	D <sub>1</sub>	D <sub>2</sub>	L
ER 16	0.5 ~ 10	16	17	27.5
ER 25	1 ~ 16	25	26	34
ER 32	2 ~ 20	32	33	40
ER 40	3 ~ 26	40	41	46

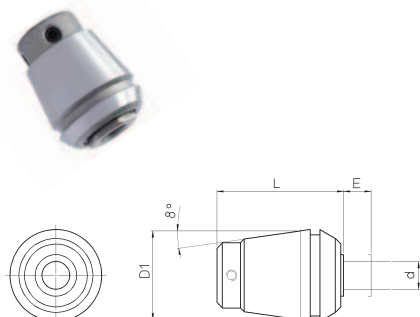
RANGE	ER16	ER25	ER32	ER40
1 - 0.5	49 60 8 0016010	-	-	-
1.5 - 1	49 60 8 0016015	-	-	-
2 - 1.5	49 60 8 0016020	49 60 8 0025020	-	-
2.5 - 2	49 60 8 0016025	49 60 8 0025025	49 60 8 0032025	-
3 - 2.5	49 60 8 0016030	49 60 8 0025030	49 60 8 0032030	-
3.5 - 3	49 60 8 0016035	49 60 8 0025035	49 60 8 0032035	-
4 - 3.5	49 60 8 0016040	49 60 8 0025040	49 60 8 0032040	49 60 8 0040040
4.5 - 4	49 60 8 0016045	49 60 8 0025045	49 60 8 0032045	49 60 8 0040045
5 - 4.5	49 60 8 0016050	49 60 8 0025050	49 60 8 0032050	49 60 8 0040050
5.5 - 5	49 60 8 0016055	49 60 8 0025055	49 60 8 0032055	49 60 8 0040055
6 - 5.5	49 60 8 0016060	49 60 8 0025060	49 60 8 0032060	49 60 8 0040060
6.5 - 6	49 60 8 0016065	49 60 8 0025065	49 60 8 0032065	49 60 8 0040065
7 - 6.5	49 60 8 0016070	49 60 8 0025070	49 60 8 0032070	49 60 8 0040070
7.5 - 7	49 60 8 0016075	49 60 8 0025075	49 60 8 0032075	49 60 8 0040075
8 - 7.5	49 60 8 0016080	49 60 8 0025080	49 60 8 0032080	49 60 8 0040080
8.5 - 8	49 60 8 0016085	49 60 8 0025085	49 60 8 0032085	49 60 8 0040085
9 - 8.5	49 60 8 0016090	49 60 8 0025090	49 60 8 0032090	49 60 8 0040090
9.5 - 9	49 60 8 0016095	49 60 8 0025095	49 60 8 0032095	49 60 8 0040095
10 - 9.5	49 60 8 0016100	49 60 8 0025100	49 60 8 0032100	49 60 8 0040100
10.5 - 10	-	49 60 8 0025105	49 60 8 0032105	49 60 8 0040105
11 - 10.5	-	49 60 8 0025110	49 60 8 0032110	49 60 8 0040110
11.5 - 11	-	49 60 8 0025115	49 60 8 0032115	49 60 8 0040115
12 - 11.5	-	49 60 8 0025120	49 60 8 0032120	49 60 8 0040120
12.5 - 12	-	49 60 8 0025125	49 60 8 0032125	49 60 8 0040125
13 - 12.5	-	49 60 8 0025130	49 60 8 0032130	49 60 8 0040130
13.5 - 13	-	49 60 8 0025135	49 60 8 0032135	49 60 8 0040135
14 - 13.5	-	49 60 8 0025140	49 60 8 0032140	49 60 8 0040140
14.5 - 14	-	49 60 8 0025145	49 60 8 0032145	49 60 8 0040145
15 - 14.5	-	49 60 8 0025150	49 60 8 0032150	49 60 8 0040150
15.5 - 15	-	49 60 8 0025155	49 60 8 0032155	49 60 8 0040155
16 - 15.5	-	49 60 8 0025160	49 60 8 0032160	49 60 8 0040160
16.5 - 16	-	-	49 60 8 0032165	49 60 8 0040165
17 - 16.5	-	-	49 60 8 0032170	49 60 8 0040170
17.5 - 17	-	-	49 60 8 0032175	49 60 8 0040175
18 - 17.5	-	-	49 60 8 0032180	49 60 8 0040180
18.5 - 18	-	-	49 60 8 0032185	49 60 8 0040185
19 - 18.5	-	-	49 60 8 0032190	49 60 8 0040190
19.5 - 19	-	-	49 60 8 0032195	49 60 8 0040195
20 - 19.5	-	-	49 60 8 0032200	49 60 8 0040200
20.5 - 20	-	-	-	49 60 8 0040205
21 - 20.5	-	-	-	49 60 8 0040210
21.5 - 21	-	-	-	49 60 8 0040215
22 - 21.5	-	-	-	49 60 8 0040220
22.5 - 22	-	-	-	49 60 8 0040225
23 - 22.5	-	-	-	49 60 8 0040230
23.5 - 23	-	-	-	49 60 8 0040235
24 - 23.5	-	-	-	49 60 8 0040240
24.5 - 24	-	-	-	49 60 8 0040245
25 - 24.5	-	-	-	49 60 8 0040250
25.5 - 25	-	-	-	49 60 8 0040255
26 - 25.5	-	-	-	49 60 8 0040260



# D'ANDREA ACCESSORIES

- TAPPING COLLETS WITH AXIAL COMPENSATION
- ЦАНГИ НАРЕЗАНИЯ РЕЗЬБЫ С ОСЕВОЙ КОМПЕНСАЦИЕЙ
- TULEJE ZACISKOWA GWINTUJĄCE Z KOMPENSACJĄ OSIOWĄ
- ZÁVITOŘEZNÁ POUZDRA S AXIÁLNI KOMPENZACÍ
- EKSENEL TELAFILI DIŞ ÇEKME BIÇAĞI TUTUCULARI

**ET-1- ER**

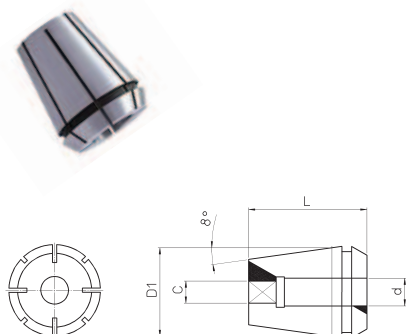


REF.	CODE	d	D <sub>1</sub>	L	E	
<b>ET-1-ER25</b> (M2 - M12)	49 60 8 6125280	2.8	26	34	8	10 045 1 01 25 00
	49 60 8 6125350	3.5				
	49 60 8 6125450	4.5				
	49 60 8 6125600	6				
	49 60 8 6125700	7				
49 60 8 6125900	9					
<b>ET-1-ER32</b> (M4 - M16)	49 60 8 6132450	4.5	33	43	10	10 045 1 03 32 00
	49 60 8 6132600	6				
	49 60 8 6132700	7				
	49 60 8 6132900	9				
	49 60 8 6132110	11				
	49 60 8 6132120	12				
<b>ET-1-ER40</b> (M8 - M20)	49 60 8 6140600	6	41	54	13	10 045 1 03 40 00
	49 60 8 6140700	7				
	49 60 8 6140900	9				
	49 60 8 6140110	11				
	49 60 8 6140120	12				
	49 60 8 6140140	14				
	49 60 8 6140160	16				

• On request • Поставляются по запросу • Na zamówienie • Na vyžádání • İsteğe bağılı

- TAPPING COLLETS WITHOUT AXIAL COMPENSATION
- ЗАЖИМЫ ДЛЯ НАРЕЗАНИЯ ВНУТРЕННИХ РЕЗЬБ МЕТЧИ КОМ
- TULEJE ZACISKOWE DO MASKOWANIA SZTYWNEGO
- PEVNÁ ZÁVITOŘEZNÁ POUZDRA
- DIŞ ÇEKME İÇİN KARGABURUN

**ER - GB**



REF.	CODE	(d Ø x c )	DIN 371	DIN 374-376	D <sub>1</sub>	L	
<b>ER 16-GB</b> (M4 - M10)	49 60 8 5116045	4.5 x 3.4	M4	M6	16	27.5	10 045 1 01 16 00
	49 60 8 5116055	5.5 x 4.3	-	M7			
	49 60 8 5116060	6 x 4.9	M5	M8			
	49 60 8 5116070	7 x 5.5	M6	M10			
<b>ER 25-GB</b> (M4 - M16)	49 60 8 5125045	4.5 x 3.4	M4	M6	25	34	10 045 1 01 25 00
	49 60 8 5125055	5.5 x 4.3	-	M7			
	49 60 8 5125060	6 x 4.9	M5	M8			
	49 60 8 5125070	7 x 5.5	-	M10			
	49 60 8 5125090	9 x 7	-	M12			
	49 60 8 5125110	11 x 9	-	M14			
	49 60 8 5125120	12 x 9	-	M16			
	49 60 8 5132045	4.5 x 3.4	M4	M6			
49 60 8 5132055	5.5 x 4.3	-	M7				
49 60 8 5132060	6 x 4.9	M5	M8				
49 60 8 5132070	7 x 5.5	-	M10				
49 60 8 5132090	9 x 7	-	M12				
49 60 8 5132110	11 x 9	-	M14				
49 60 8 5132120	12 x 9	-	M16				
49 60 8 5132140	14 x 11	-	M18				
49 60 8 5132160	16 x 12	-	M20	40	46	10 045 1 03 40 00	
49 60 8 5140070	7 x 5.5	-	M10				
49 60 8 5140090	9 x 7	-	M12				
49 60 8 5140110	11 x 9	-	M14				
49 60 8 5140120	12 x 9	-	M16				
49 60 8 5140140	14 x 11	-	M18				
49 60 8 5140160	16 x 12	-	M20				
49 60 8 5140180	18 x 14.5	-	M22				
49 60 8 5140200	20 x 16	-	M24				
49 60 8 5140200	20 x 16	-	M27				

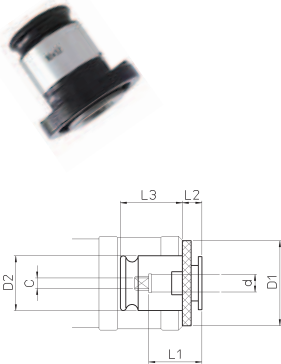
• On request • Поставляются по запросу • Na zamówienie • Na vyžádání • İsteğe bağılı

- For TOPRUN spindles, use ring-nuts shown in the chart
- Для использования на шпинделях TOPRUN использовать зажимные кольца, указанные в таблице
- W przypadku stosowania na wrzecionach TOPRUN, użyć tulei wskazanych w tabeli
- Pro vřetena TOPRUN použijte kroužkové matice podle grafu
- TOPRUN milleri için tabloda gösterilen halka somunları kullanın



- QUICK CHANGE TAP HOLDERS WITHOUT TORQUE CLUTCH
- БЫСТРОЗАМЕНЯЕМЫЕ ВТУЛКИ БЕЗ ОГРАНИЧЕНИЯ ПАРЫ
- TULEJE SZYBKOZMIENNE BEZ OGRANICZEN W ZAKRESIE PARY SIŁ
- DRŽÁKY PRO RYCHLOU VÝMĚNU BEZ MOMENTOVÉ SVORKY
- HIZLI DEĞİŞTİRİLEBİLEN TORK MILLİ KILAVUZ ÇEKME BIÇAĞI TUTUCULARI

**BFC**

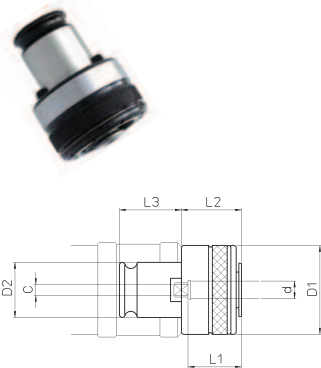


REF.	CODE	(d Ø x c)	DIN 371	DIN 374	DIN 376	D1	D2	L1	L2	L3
<b>BFC1</b> (M3 ~ 12)	49 50 6 1035027	3.5 x 2.7	M3	M5	M5	30	19	17	7	21.5
	49 50 6 1045034	4.5 x 3.4	M4	M6	M6					
	49 50 6 1055043	5.5 x 4.3	-	M7	M7					
	49 50 6 1060049	6 x 4.9	M5 M6	M8	M8					
	49 50 6 1070055	7 x 5.5	-	M10	M10					
	49 50 6 1090070	9 x 7	-	M12	M12					
<b>BFC2</b> (M6 ~ 20)	49 50 6 2060049	6 x 4.9	M5 M6	M8	M8	48	31	30	11	35
	49 50 6 2070055	7 x 5.5	-	M10	M10					
	49 50 6 2090070	9 x 7	-	M12	M12					
	49 50 6 2110090	11 x 9	-	M14	M14					
	49 50 6 2120090	12 x 9	-	M16	M16					
	49 50 6 2140110	14 x 11	-	M18	M18					
	49 50 6 2160120	16 x 12	-	M20	M20					
<b>BFC3</b> (M14 ~ 33)	49 50 6 3110090	11 x 9	-	M14	M14	70	48	44	14	55.5
	49 50 6 3120090	12 x 9	-	M16	M16					
	49 50 6 3140110	14 x 11	-	M18	M18					
	49 50 6 3160120	16 x 12	-	M20	M20					
	49 50 6 3180145	18 x 14.5	-	M22 M24	M22 M24					
	49 50 6 3200160	20 x 16	-	M27	M27					
	49 50 6 3220180	22 x 18	-	M30	M30					
	49 50 6 3250200	25 x 20	-	M33	M33					

• On request • Поставляются по запросу • Na zamówienie • Na vyžádání • İsteğe bağılı

- QUICK CHANGE TAP HOLDERS WITH TORQUE CLUTCH
- ВТУЛКИ БЫСТРОЙ СМЕНЫ С ОГРАНИЧЕНИЕМ МОМЕНТА
- TULEJE SZYBKOZMIENNE Z OGRANICZENIEM MOMENTU OBROTOWEGO
- DRŽÁKY PRO RYCHLOU VÝMĚNU S MOMENTOVOU SVORKOU
- HIZLI DEĞİŞTİRİLEBİLEN TORK MILSİZ KILAVUZ ÇEKME BIÇAĞI TUTUCULARI

**BFS**



REF.	CODE	(d Ø x c)	DIN 371	DIN 374	DIN 376	D1	D2	L1	L2	L3
<b>BFS1</b> (M3 ~ 12)	49 50 7 1035027	3.5 x 2.7	M3	M5	M5	32	19	17	25	21.5
	49 50 7 1040030	4 x 3	M3.5	-	-					
	49 50 7 1045034	4.5 x 3.4	M4	M6	M6					
	49 50 7 1055043	5.5 x 4.3	-	M7	M7					
	49 50 7 1060049	6 x 4.9	M5 M6	M8	M8					
	49 50 7 1070055	7 x 5.5	-	M10	M10					
	49 50 7 1080062	8 x 6.2	M8	-	-					
	49 50 7 1090070	9 x 7	-	M12	M12					
	49 50 7 1100080	10 x 8	M10	-	-					
<b>BFS2</b> (M6 ~ 20)	49 50 7 2060049	6 x 4.9	M5 M6	M8	M8	50	31	30	34	35
	49 50 7 2070055	7 x 5.5	-	M10	M10					
	49 50 7 2080062	8 x 6.2	M8	-	-					
	49 50 7 2090070	9 x 7	-	M12	M12					
	49 50 7 2100080	10 x 8	M10	-	-					
	49 50 7 2110090	11 x 9	-	M14	M14					
	49 50 7 2120090	12 x 9	-	M16	M16					
	49 50 7 2140110	14 x 11	-	M18	M18					
49 50 7 2160120	16 x 12	-	M20	M20						
<b>BFS3</b> (M14 ~ 33)	49 50 7 3110090	11 x 9	-	M14	M14	72	48	44	45	55.5
	49 50 7 3120090	12 x 9	-	M16	M16					
	49 50 7 3140110	14 x 11	-	M18	M18					
	49 50 7 3160120	16 x 12	-	M20	M20					
	49 50 7 3180145	18 x 14.5	-	M22 M24	M22 M24					
	49 50 7 3200160	20 x 16	-	M27	M27					
	49 50 7 3220180	22 x 18	-	M30	M30					
	49 50 7 3250200	25 x 20	-	M33	M33					

• On request • Поставляются по запросу • Na zamówienie • Na vyžádání • İsteğe bağılı